

## Insulation Covers Frese Valves DN10-DN50

### Description

The insulation covers have been specifically designed for the insulation of OPTIMA Compact, PV Compact, SIGMA Compact, ALPHA and Frese VODRV.

The use of insulation on valves will result in reduced thermal loss and improved heat economy.

### Application

For heating applications only.

### Benefits

- Easy installation and removal - no retaining straps required
- Robust material allows reuse
- The valve can be adjusted with the insulation mounted
- Reduces thermal heat loss
- Easy access to PT plugs without the need to remove the insulation



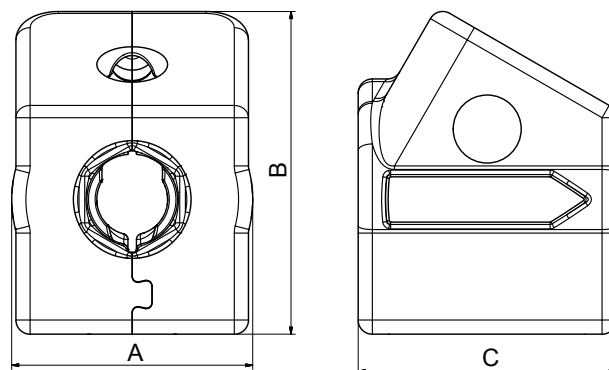
### Features

- Fire resistant in accordance with the DIN 4102: B2 fire rating
- Resistant to most chemicals - will not be attacked by dry rot or mold
- Does not absorb moisture
- Flow indication arrows and valve size clearly visible


## Insulation Covers Frese Valves DN10-DN50

### Technical data · Insulation Covers for OPTIMA Compact, PV Compact and SIGMA Compact

<b>Material:</b>	EPP (Expanded Polypropylene)
<b>Water absorption:</b>	< 2.5 vol% at 20°C
<b>Temperature range:</b>	up to 120°C
<b>Insulating property:</b>	Lambda = 0.039 W/mk
<b>Density:</b>	50 g/l
<b>Fire resistant:</b>	According to DIN 4102: B2



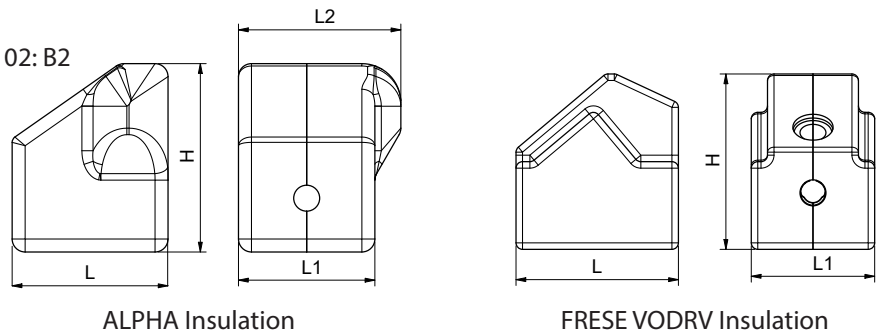
### Product programme

	Valve Type	Valve Dimension	Insulation Cover Measures AxBxC [mm]	Frese no.
	OPTIMA Compact & PV Compact	DN10-DN15-DN20	85 x 114 x 91	38-0857
	OPTIMA Compact & PV Compact	DN25	119 x 134 x 102	38-0858
	OPTIMA Compact	DN25L-DN32	131 x 165 x 115	38-0859
	PV Compact	DN25L-DN32	131 x 165 x 115	38-0860
	SIGMA Compact	DN15-DN20	85 x 114 x 91	38-0861
	SIGMA Compact	DN25	119 x 134 x 102	38-0862
	SIGMA Compact	DN25L-DN32	131 x 165 x 115	38-0863



## Insulation Covers Frese Valves DN10-DN50

### Technical data · Insulation Covers for ALPHA, Frese VODRV and PV / OPTIMA / SIGMA Compact

<b>Material:</b>	EPE (Crosslinked Expanded Polyethylene)
<b>Water absorption:</b>	< 1 vol% at 20°C
<b>Temperature range:</b>	up to 90°C
<b>Insulating property:</b>	Lambda = 0.041 W/mk
<b>Density:</b>	30 g/l
<b>Fire resistant:</b>	According to DIN 4102: B2

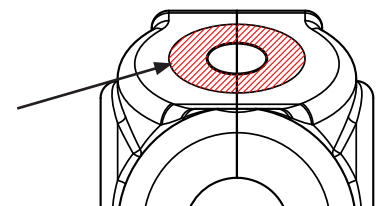


### Product programme and dimensions

	Valve Type	Dim.	Frese no.	L [mm]	L1 [mm]	L2 [mm]	H [mm]
	ALPHA	DN15	38-0869	120	105	125	145
		DN20	38-0870	125	115	135	145
	Frese VODRV	DN15	38-0871	125	95	-	135
		DN20	38-0872	130	100	-	135
		DN25	38-0873	145	110	-	150
		DN32	38-0874	170	115	-	152
		DN40	38-0875	160	130	-	166
		DN50	38-0876	180	150	-	182
	PV Compact	DN40/50	38-0877	225	165	-	290
	OPTIMA/SIGMA Compact	DN40/50	38-0878*	225	160	-	280

\*) The insulation jacket is suitable for both SIGMA Compact and OPTIMA Compact DN40-DN50.

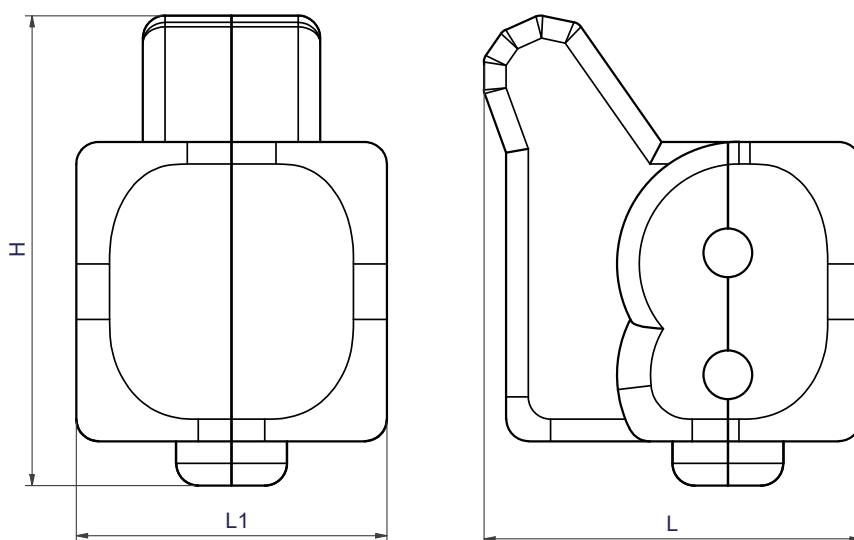
When it is used on OPTIMA Compact, the top part (hatched area) of the insulation jacket needs to be cut away. The part is made thinner for this purpose.



## Insulation Covers Frese Valves DN10-DN50

### Technical data · Insulation Covers for COMBIFLOW

<b>Material:</b>	EPE (Crosslinked Expanded Polyethylene)
<b>Water absorption:</b>	< 1 vol% at 20°C
<b>Temperature range:</b>	up to 90°C
<b>Insulating property:</b>	Lambda = 0.041 W/mk
<b>Density:</b>	30 g/l
<b>Fire resistant:</b>	According to DIN 4102: B2



### Product programme and dimensions

	Valve Type	Dim.	Frese no.	L [mm]	L1 [mm]	H [mm]
	COMBIFLOW	DN15	38-0879	170	140	212
		DN20	38-0880	195	155	233

EN Insulation Covers Frese Valves DN10-DN50 SEP 21

Frese A/S assumes no responsibility for errors, if any, in catalogues, brochures, and other printed matter. Frese A/S reserves the right to modify its products without prior notice, including already ordered products, if this does not alter existing specifications. All registered trademarks in this material are the property of Frese A/S. All rights reserved.

Frese A/S  
Sorøvej 8  
DK- 4200 Slagelse  
Tel: +45 58 56 00 00  
info@frese.dk